

# NOTICE TO MARINERS

**SSE Renewables - Notice to Mariners. Issue Date 07/02/2023 (first issue).**

## Overview

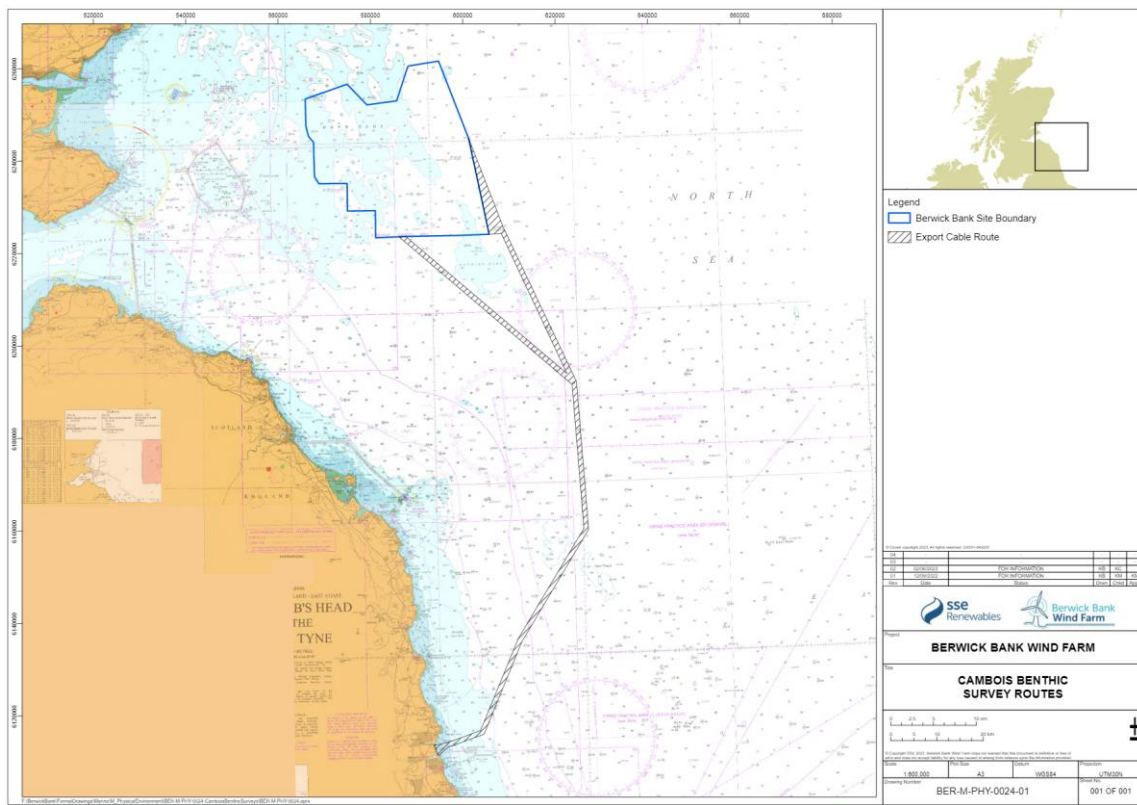
Mariners are advised that SSE Renewables will be undertaking a subtidal benthic survey of the Cambois Connection, an offshore export cable associated with Berwick Bank Wind Farm. The survey will be within the export cable route (see Figure 1), with the respective co-ordinates listed in Table 1. It should be noted that SSE Renewables are not requesting fishermen to relocate gear - on this occasion the vessels will work around any gear on location. The survey work is being undertaken by Natural Power and will be conducted from the Princess Royal.

## Survey Duration

The earliest the survey will mobilise is the 15 February 2023, alternative mobilisation dates are 28 February 2023 or 6 March 2023. Once mobilised the survey will have a three day duration. The expected completion date of the subtidal benthic survey will be 18 February 2023, 3 March 2023 or 9 March 2023 (dependent on mobilisation date).

## Survey Tasks

During the survey campaign, the vessel will deploy an underwater drop down video/camera to gather data on the ecology of the seabed. No towered gear operations will be taking place. The vessel will be generally unrestricted in its movements and will adhere to normal navigation protocol. The survey area is defined by the following WGS84 coordinates in Table 1, which provide the site boundaries for the export cable route:



**Figure 1: Cambois Connection Benthic Survey Boundary**

**Table 1 – Cambois Connection Benthic Survey Coordinates**

ID	Lat_DD	Long_DD	Lat_DDM	Long_DDM
1	55.14113	-1.511528	55° 8.468' N	1° 30.692' W
2	55.14175	-1.514759	55° 8.505' N	1° 30.886' W
3	55.146615	-1.519262	55° 8.797' N	1° 31.156' W
4	55.150531	-1.521581	55° 9.032' N	1° 31.295' W
5	55.155108	-1.523368	55° 9.307' N	1° 31.402' W
6	55.15676	-1.52406	55° 9.406' N	1° 31.444' W
7	55.157704	-1.524661	55° 9.462' N	1° 31.480' W
8	55.158707	-1.524952	55° 9.522' N	1° 31.497' W
9	55.159861	-1.525514	55° 9.592' N	1° 31.531' W
10	55.159992	-1.525612	55° 9.600' N	1° 31.537' W
11	55.160119	-1.525766	55° 9.607' N	1° 31.546' W
12	55.160644	-1.527012	55° 9.639' N	1° 31.621' W
13	55.160976	-1.527614	55° 9.659' N	1° 31.657' W
14	55.161499	-1.529001	55° 9.690' N	1° 31.740' W
15	55.161693	-1.529463	55° 9.702' N	1° 31.768' W
16	55.161786	-1.529393	55° 9.707' N	1° 31.764' W
17	55.161514	-1.528804	55° 9.691' N	1° 31.728' W
18	55.161259	-1.528037	55° 9.676' N	1° 31.682' W
19	55.160874	-1.526472	55° 9.652' N	1° 31.588' W
20	55.160638	-1.525478	55° 9.638' N	1° 31.529' W
21	55.160496	-1.524599	55° 9.630' N	1° 31.476' W
22	55.160555	-1.523901	55° 9.633' N	1° 31.434' W
23	55.161202	-1.522672	55° 9.672' N	1° 31.360' W
24	55.161332	-1.522488	55° 9.680' N	1° 31.349' W
25	55.161493	-1.52242	55° 9.690' N	1° 31.345' W
26	55.161722	-1.522434	55° 9.703' N	1° 31.346' W
27	55.161814	-1.522387	55° 9.709' N	1° 31.343' W
28	55.161827	-1.522368	55° 9.710' N	1° 31.342' W
29	55.161787	-1.521814	55° 9.707' N	1° 31.309' W
30	55.161697	-1.521841	55° 9.702' N	1° 31.310' W
31	55.1613	-1.522024	55° 9.678' N	1° 31.321' W
32	55.161236	-1.522037	55° 9.674' N	1° 31.322' W
33	55.161198	-1.522017	55° 9.672' N	1° 31.321' W
34	55.161145	-1.521818	55° 9.669' N	1° 31.309' W
35	55.161152	-1.521744	55° 9.669' N	1° 31.305' W
36	55.161225	-1.521668	55° 9.674' N	1° 31.300' W
37	55.161398	-1.521496	55° 9.684' N	1° 31.290' W
38	55.161471	-1.521387	55° 9.688' N	1° 31.283' W
39	55.161479	-1.521356	55° 9.689' N	1° 31.281' W
40	55.161497	-1.521287	55° 9.690' N	1° 31.277' W
41	55.161492	-1.521179	55° 9.690' N	1° 31.271' W
42	55.161608	-1.520058	55° 9.696' N	1° 31.203' W

ID	Lat_DD	Long_DD	Lat_DDM	Long_DDM
43	55.165752	-1.480056	55° 9.945' N	1° 28.803' W
44	55.168901	-1.463789	55° 10.134' N	1° 27.827' W
45	55.187283	-1.368554	55° 11.237' N	1° 22.113' W
46	55.361523	-1.234516	55° 21.691' N	1° 14.071' W
47	55.36174	-1.235349	55° 21.704' N	1° 14.121' W
48	55.574969	-0.997166	55° 34.498' N	0° 59.830' W
49	55.854953	-1.023842	55° 51.297' N	1° 1.430' W
50	56.14601	-1.604184	56° 8.761' N	1° 36.251' W
51	56.149973	-1.612459	56° 8.998' N	1° 36.748' W
52	56.149982	-1.611612	56° 8.999' N	1° 36.697' W
53	56.150102	-1.600226	56° 9.006' N	1° 36.014' W
54	56.150226	-1.588421	56° 9.014' N	1° 35.305' W
55	56.14979	-1.587539	56° 8.987' N	1° 35.252' W
56	55.876777	-1.040769	55° 52.607' N	1° 2.446' W
57	56.14649	-1.251665	56° 8.789' N	1° 15.100' W
58	56.152301	-1.256244	56° 9.138' N	1° 15.375' W
59	56.150951	-1.298084	56° 9.057' N	1° 17.885' W
60	56.157513	-1.300296	56° 9.451' N	1° 18.018' W
61	56.181773	-1.308479	56° 10.906' N	1° 18.509' W
62	56.20195	-1.315293	56° 12.117' N	1° 18.918' W
63	56.238876	-1.327782	56° 14.333' N	1° 19.667' W
64	56.286749	-1.344009	56° 17.205' N	1° 20.641' W
65	56.295363	-1.346931	56° 17.722' N	1° 20.816' W
66	56.311282	-1.352333	56° 18.677' N	1° 21.140' W
67	56.311667	-1.352464	56° 18.700' N	1° 21.148' W
68	56.323112	-1.356351	56° 19.387' N	1° 21.381' W
69	56.3384	-1.361547	56° 20.304' N	1° 21.693' W
70	56.316757	-1.347419	56° 19.005' N	1° 20.845' W
71	56.277455	-1.321807	56° 16.647' N	1° 19.308' W
72	56.275496	-1.320532	56° 16.530' N	1° 19.232' W
73	56.244985	-1.300688	56° 14.699' N	1° 18.041' W
74	56.190041	-1.265038	56° 11.402' N	1° 15.902' W
75	56.159589	-1.245326	56° 9.575' N	1° 14.720' W
76	56.159588	-1.245324	56° 9.575' N	1° 14.719' W
77	56.1571	-1.242625	56° 9.426' N	1° 14.557' W
78	55.860402	-1.008368	55° 51.624' N	1° 0.502' W
79	55.857919	-1.008131	55° 51.475' N	1° 0.488' W
80	55.574014	-0.981196	55° 34.441' N	0° 58.872' W
81	55.572579	-0.981061	55° 34.355' N	0° 58.864' W
82	55.571366	-0.982421	55° 34.282' N	0° 58.945' W
83	55.357808	-1.220304	55° 21.468' N	1° 13.218' W
84	55.181857	-1.355564	55° 10.911' N	1° 21.334' W
85	55.180035	-1.356959	55° 10.802' N	1° 21.418' W
86	55.179401	-1.360252	55° 10.764' N	1° 21.615' W

ID	Lat_DD	Long_DD	Lat_DDM	Long_DDM
87	55.159112	-1.465361	55° 9.547' N	1° 27.922' W
88	55.155955	-1.481664	55° 9.357' N	1° 28.900' W
89	55.141359	-1.511067	55° 8.482' N	1° 30.664' W
90	55.14113	-1.511528	55° 8.468' N	1° 30.692' W

### Survey Vessels – Princess Royal



#### Vessel name – Princess Royal

Vessel Call Sign: 2EYM2  
 Iridium number (vessel): +870773991456  
 Bridge number: +44 (0) 7730979784  
 Vessel manager: Neil Armstrong  
 Email: neil.armstrong@newcastle.ac.uk

**Survey Contact Details**

Further marine enquiries should be addressed to the following person:

Stuart McCallum  
Technical Director  
mobile: +44 7880 291 116  
email: [stuartm@naturalpower.com](mailto:stuartm@naturalpower.com)

**Project Onshore Fisheries Liaison**

Onshore fisheries liaison for this survey will be co-ordinated by Brown and May Marine (BMM). If there are commercial fishery queries, please contact Sophie Farenden, Office T: 01379 872149; Mobile T: 07525 128344 ([sophie.farenden@brownmay.com](mailto:sophie.farenden@brownmay.com)).

SSE Renewables are not requesting gear clearance - on this occasion the vessel will work around any gear on location.

**FURTHER DETAILS ARE AVAILABLE FROM:**

Kerrie Craig  
SSE Renewables  
One Waterloo Street  
Glasgow  
G2 6AY  
Mobile: +44(0)7587 160161  
E-mail: [kerrie.craig@sse.com](mailto:kerrie.craig@sse.com)

If not available, please contact:

Anja Schoene  
SSE Renewables  
One Waterloo Street  
Glasgow  
G2 6AY  
Mobile: +44(0)7952 300206  
E-mail: [anja.schoene@sse.com](mailto:anja.schoene@sse.com)