

NOTICE TO MARINERS

SSE Renewables - Notice to Mariners 06/2022. Issue Date 06/06/2022 (First issue).

Overview

Mariners are advised that SSE Renewables will be returning to Berwick Bank Wind Farm area to undertake further Geotechnical survey work. The survey will be within the proposed Berwick Bank Wind Farm site boundary and export cable route (see Figure 1). Respective co-ordinates are listed in Table 1 and Table 2. Please note that the coordinates in Table 2 extend to -15m LAT avoiding the nearshore area.

It should be noted that SSE Renewables are not expecting fishermen to relocate gear - on this occasion the vessel(s) will work around any gear on location. A scouting/guard vessel will operate ahead of the survey vessel to ensure that this can be achieved.

The survey work is being undertaken by GEO and will be conducted from the vessel Northern Ocean. The scouting/guard vessel will be the Artemis.

Survey Duration

The survey is planned to mobilise between 15th and 20th June 2022 lasting approximately 2 months.

Survey Tasks

The scope of work within the main array area will comprise approximately 100 seabed CPTs to a maximum depth of 30 m below the seafloor (bsf) and approximately 100 co-located vibrocores to a maximum depth of 6 m bsf. The scope of work along the export cable route will comprise approximately 80 seabed CPTs and 80 co-located vibrocores to a maximum depth of 6 m bsf.

During the survey campaign, the vessel(s) will be deploying underwater equipment to gather cores and also assess the geology in the area. As a consequence of equipment being deployed and the modes of operation, all mariners are advised to keep a safe clearance distance of no less than 500 m from the vessel(s).

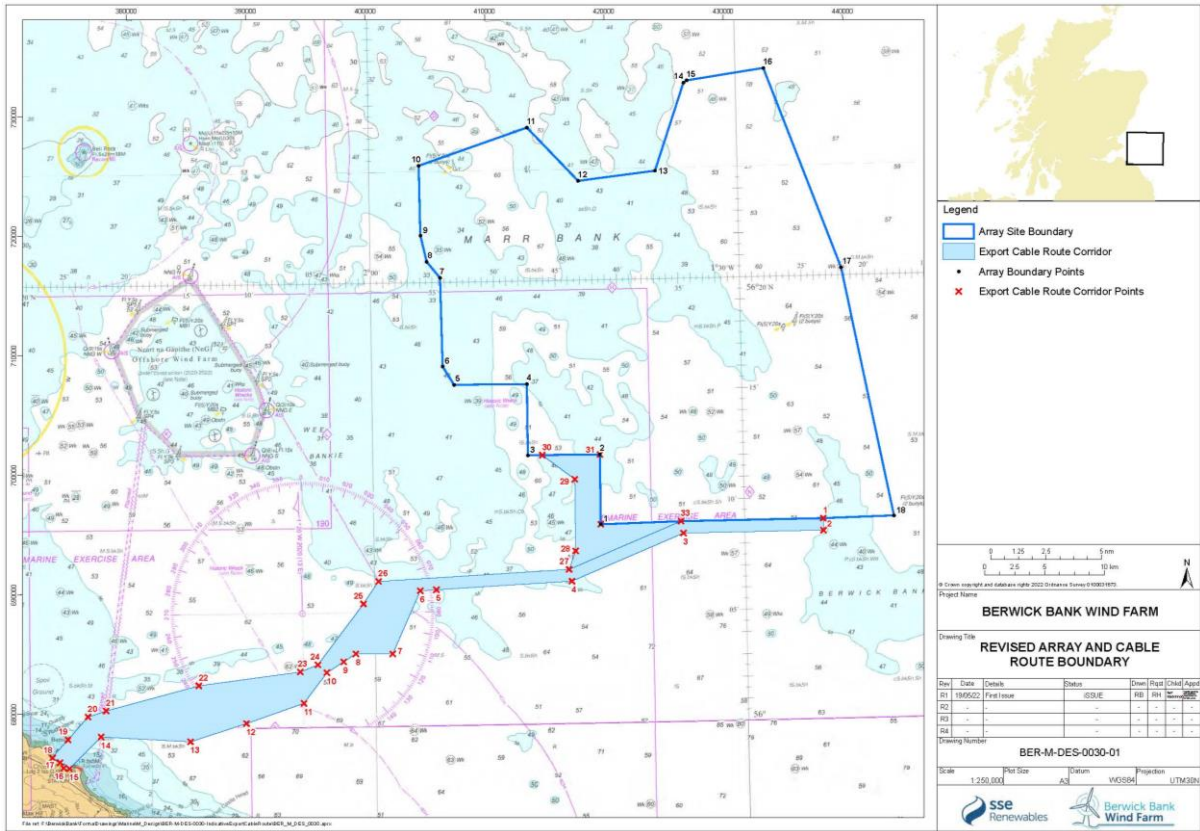


Figure 1: Berwick Bank Wind Farm Site Boundary (ECR survey area extending to -15m LAT)

Table 1 – Berwick Bank Wind Farm Site Array Boundary Coordinates

Ref	Lat (DD)	Lon (DD)	DDM	DDM
1	56.149083	-1.69355	56° 8.945' N	1° 41.613' W
2	56.201613	-1.692975	56° 12.097' N	1° 41.579' W
3	56.201843	-1.790332	56° 12.111' N	1° 47.420' W
4	56.255454	-1.789946	56° 15.327' N	1° 47.397' W
5	56.2558	-1.888425	56° 15.348' N	1° 53.306' W
6	56.269905	-1.903564	56° 16.194' N	1° 54.214' W
7	56.336499	-1.905187	56° 20.190' N	1° 54.311' W
8	56.348731	-1.923023	56° 20.924' N	1° 55.381' W
9	56.368404	-1.930763	56° 22.104' N	1° 55.846' W
10	56.420914	-1.931773	56° 25.255' N	1° 55.906' W
11	56.448324	-1.783874	56° 26.899' N	1° 47.032' W
12	56.407596	-1.715637	56° 24.456' N	1° 42.938' W
13	56.414118	-1.610984	56° 24.847' N	1° 36.659' W
14	56.479776	-1.569906	56° 28.787' N	1° 34.194' W
15	56.481537	-1.565624	56° 28.892' N	1° 33.937' W
16	56.489602	-1.460808	56° 29.376' N	1° 27.648' W
17	56.3384	-1.361547	56° 20.304' N	1° 21.693' W
18	56.150951	-1.298084	56° 9.057' N	1° 17.885' W

Table 2 – Export Cable Route Coordinates

Marker	Lat (DD)	Lon (DD)	DDM	DDM
1	56.150194	-1.393506	56° 9.012' N	1° 23.610' W
2	56.14121	-1.393538	56° 8.473' N	1° 23.612' W
3	56.141274	-1.582333	56° 8.476' N	1° 34.940' W
4	56.106731	-1.733909	56° 6.404' N	1° 44.035' W
5	56.102026	-1.916803	56° 6.122' N	1° 55.008' W
6	56.101419	-1.938315	56° 6.085' N	1° 56.299' W
7	56.054253	-1.976704	56° 3.255' N	1° 58.602' W
8	56.054655	-2.026349	56° 3.279' N	2° 1.581' W
9	56.048821	-2.042956	56° 2.929' N	2° 2.577' W
10	56.040855	-2.065643	56° 2.451' N	2° 3.939' W
11	56.01801	-2.097082	56° 1.081' N	2° 5.825' W
12	56.003354	-2.174627	56° 0.201' N	2° 10.478' W
13	55.990158	-2.250082	55° 59.409' N	2° 15.005' W
14	55.994413	-2.370046	55° 59.665' N	2° 22.203' W
15	55.980317	-2.401057	55° 58.819' N	2° 24.063' W
16	55.976503	-2.402575	55° 58.590' N	2° 24.154' W
17	55.98208	-2.401295	55° 58.925' N	2° 24.078' W
18	55.983882	-2.403031	55° 59.033' N	2° 24.182' W
19	55.988733	-2.418328	55° 59.324' N	2° 25.100' W
20	55.988847	-2.420588	55° 59.331' N	2° 25.235' W
21	56.009542	-2.387417	56° 0.573' N	2° 23.245' W
22	56.013928	-2.363089	56° 0.836' N	2° 21.785' W
23	56.03214	-2.238044	56° 1.928' N	2° 14.283' W
24	56.041631	-2.101386	56° 2.498' N	2° 6.083' W
25	56.046877	-2.077618	56° 2.813' N	2° 4.657' W
26	56.092183	-2.015138	56° 5.531' N	2° 0.908' W
27	56.108939	-1.994533	56° 6.536' N	1° 59.672' W
28	56.115637	-1.737417	56° 6.938' N	1° 44.245' W
29	56.129433	-1.7281	56° 7.766' N	1° 43.686' W
30	56.183333	-1.727717	56° 11.000' N	1° 43.663' W
31	56.201852	-1.770881	56° 12.111' N	1° 46.253' W
32	56.201613	-1.692975	56° 12.097' N	1° 41.579' W
33	56.149083	-1.69355	56° 8.945' N	1° 41.613' W
34	56.150256	-1.585487	56° 9.015' N	1° 35.129' W

Offshore Survey and Scouting/Guard Vessels



MV Northern Ocean

The Northern Ocean is a multipurpose DP2 platform supply vessel equipped to carry out geotechnical survey operations on a 24 / 7 basis, as well as other offshore support activities, and has a LOA of 90.2 m, a beam of 19 m and a draught of 7 m (max.). This vessel will be tasked with undertaking the geotechnical campaign.

Vessel Contact Details

MV Northern Ocean
Vessel Call Sign: OYOJ2
Inmarsat number (vessel): +870771306190
Bridge: +46 738 627551
Email: Ocean.bridge@n-o-s.eu

Contact Details

Further marine enquiries should be addressed to the following person:

Lars Rasmussen

Project Manager (Geo)

Telephone: +45 3174 0179

Email: lar@geo.dk

Address: Maglebjergvej 1, 2800 Kgs. Lyngby



Artemis INS564

The Artemis INS564 was originally built as a fishing vessel and will be working as the guard/scout vessel for the proposed geotechnical survey, and has a LOA of 28 m, a beam of 9 m and a draft of 5 m. This vessel will be tasked with undertaking all guard/scouting duties throughout the survey campaign.

Vessel Contact Details

Artemis INS564
Vessel Call Sign: MVIX5
Bridge: 01261 455461
Skipper: Colin Findlay 07949 663790
Email: concordebf47@aol.com

Contact Details

Further marine enquiries should be addressed to the MES/SFFS Operations Team at:

Email: ops@sff.co.uk

Contact Details – Fisheries Liaison

Onshore fisheries liaison for this survey will be co-ordinated by Brown and May Marine (BMM). If there are commercial fishery queries, please contact Sophie Farenden, Office T: 01379 872149; Mobile T: 07525 128344 (sophie.farenden@brownmay.com).

There will be an offshore fisheries liaison officer (OFLO) aboard the survey vessel. The OFLO will issue regular broadcasts whilst the survey vessel is operating to ensure minimal disruption and that vessels maintain an appropriate and safe distance. SSE Renewables are not expecting any fishermen to relocate gear - on this occasion the vessel will work around any gear on location.

FURTHER DETAILS ARE AVAILABLE FROM:

Nathan Ford

SSE Renewables

One Waterloo Street

Glasgow

G2 6AY

Mobile: +44(0)7943 869307 E-mail: nathan.ford@sse.com

If not available, please contact:

Douglas Watson

SSE Renewables

One Waterloo Street

Glasgow

G2 6AY

Mobile: +44(0)7342 028219 E-mail: douglas.watson2@sse.com