

NOTICE TO MARINERS

SSE Renewables - Notice to Mariners. Issue Date 26/07/2022 (First issue).

Overview

Mariners are advised that SSE Renewables will be returning to Berwick Bank Wind Farm area to undertake further Geotechnical survey work. The survey will be within the proposed Berwick Bank Wind Farm nearshore export cable route (see Figure 1). Respective co-ordinates are listed in Table 1.

Following engagement with local fisheries, SSE Renewables are aware that the area is used for static fishing operations, and that relocation of fishing gear will be required, in agreement with affected stakeholders.

The survey work is being undertaken by Fugro and will be conducted from the Skate 3E jack-up barge (with no towed gear in addition).

Survey Duration

The survey is planned to mobilise between 1 August 2022 and 15th August 2022 lasting approximately 14 - 21 days from start up, weather permitting.

Survey Tasks

The scope of work is within the nearshore cable route area and will comprise nine boreholes. During the survey campaign, the vessel(s) will be deploying underwater drilling equipment to gather cores and also assess the geology in the area.

As a consequence of equipment being deployed and the modes of operation, all mariners are advised to keep a safe clearance distance of no less than 500 m from the vessel(s).

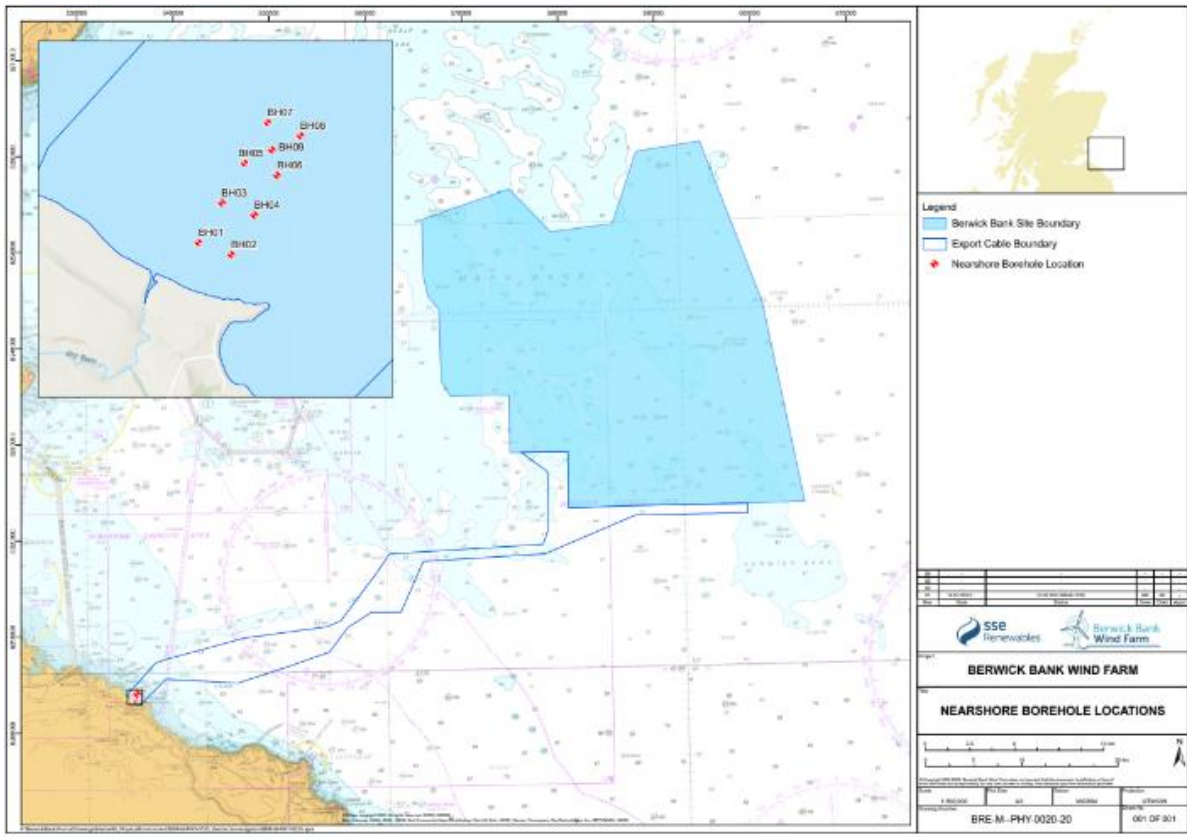


Figure 1: Berwick Bank Wind Farm Site Boundary

Table 1 – Berwick Bank Wind Farm Site Array Boundary Coordinates

Ref	Lat (DD)	Lon (DD)	LatDDM	LongDDM
1	55.976879	-2.423709	55° 58.613' N	2° 25.423' W
2	55.976367	-2.421438	55° 58.582' N	2° 25.286' W
3	55.978423	-2.422077	55° 58.705' N	2° 25.325' W
4	55.977912	-2.419814	55° 58.675' N	2° 25.189' W
5	55.979965	-2.420456	55° 58.798' N	2° 25.227' W
6	55.979442	-2.418205	55° 58.766' N	2° 25.092' W
7	55.981507	-2.418836	55° 58.890' N	2° 25.130' W
8	55.980986	-2.416574	55° 58.859' N	2° 24.994' W
9	55.980456	-2.418549	55° 58.827' N	2° 25.113' W

Offshore Survey Vessels



Skate 3E Jack-up Barge

Skate 3E is a 19.5m x 12.2m jack-up barge with a rapid deck elevating system and is equipped with four 36m long 762mm diameter legs mounted externally. It has a total deck area of 238.1m² and will be used to conduct the drilling, testing and backfilling operations.

Vessel Contact Details

Fugro Skate 3E
Bridge: 07896 697 278
Email: jimmy.wilson@fugro.com



Forth Trojan

The Forth Trojan is an MCA workboat with a LOA of 25m, a beam of 9.5m and a draught of 2.65m. It will be used to tow the jack-up barge to and from the survey site and act as a supply/support vessel during the field operations.

Vessel Contact Details

Forth Trojan
Vessel Call Sign: 2FYM4
Bridge: 07596 724 285
Email: Mvtrojan@briggsmarine.co.uk



Terra Nova

The Terra Nova is a Cat 3 Humber RHIB crew transfer vessel with a LOA of 11m, and beam of 3.5m and a draught of 1m. It will be used to transfer the survey crew between the jack-up barge and port at the start and end of each shift.

Vessel Contact Details

Terra Nova
Vessel Call Sign: MCZ14
Bridge: 07387 397 121
Email: fraser@forthlogistics.com

Contact Details

Further marine enquiries should be addressed to the following person:

Andi Hagan
Project Manager (Fugro)
Telephone: 07964 010 040
Email: a.hagan@fugro.com

Onshore Fisheries Liaison

Onshore fisheries liaison for this survey will be co-ordinated by Brown and May Marine (BMM). If there are commercial fishery queries, please contact Sophie Farenden, Office T: 01379 872149; Mobile T: 07525 128344 (sophie.farenden@brownmay.com).

FURTHER DETAILS ARE AVAILABLE FROM:

Nathan Ford
SSE Renewables
One Waterloo Street
Glasgow
G2 6AY
Mobile: +44(0)7943 869307
E-mail: nathan.ford@sse.com

If not available, please contact:

Douglas Watson
SSE Renewables
One Waterloo Street
Glasgow
G2 6AY
Mobile: +44(0)7342 028219
E-mail: douglas.watson2@sse.com