

NOTICE TO MARINERS

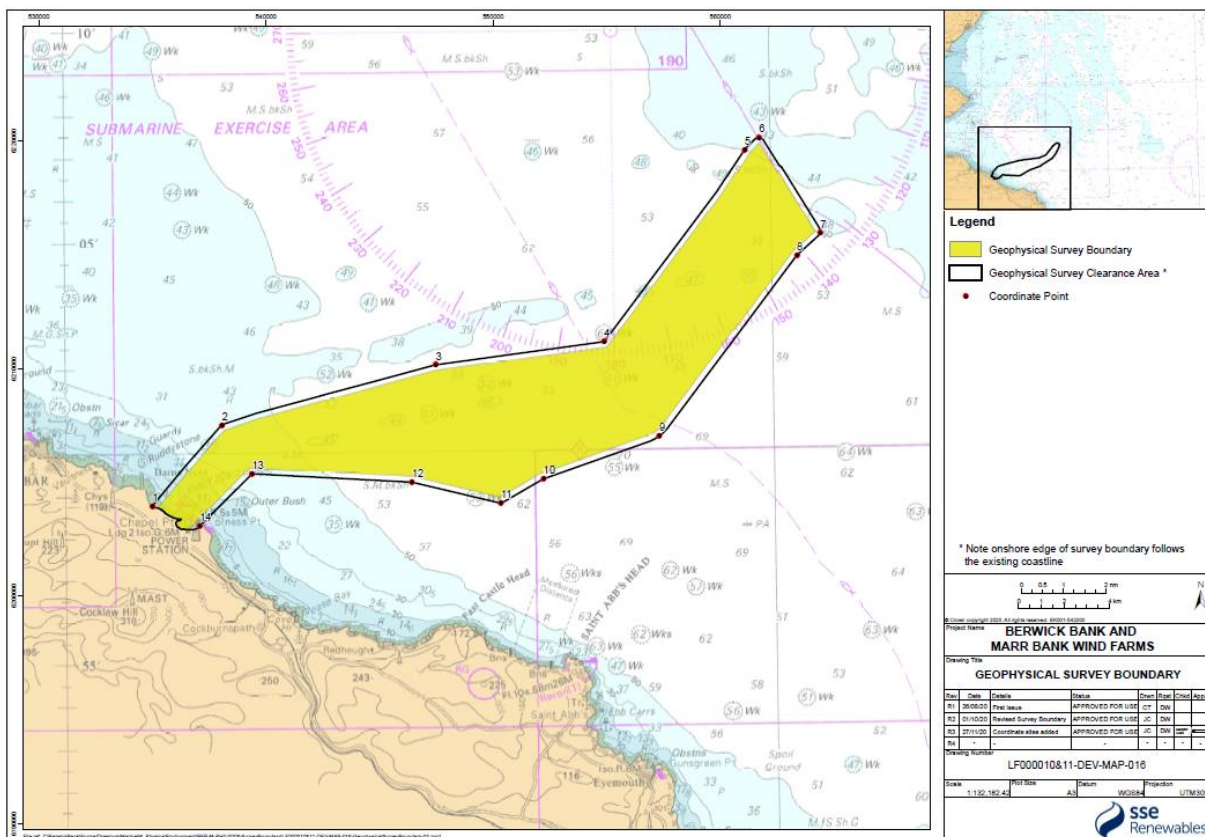
SSE Renewables - Notice to Mariners 03/2021. Issue date 19/03/2021 (Fourth issue).

Overview

Mariners are advised that SSE Renewables will be returning to the Berwick Bank Wind Farm and Marr Bank Wind Farm proposed export cable corridor areas to undertake a Geophysical survey of the area. The survey will be within the proposed Berwick Bank and Marr Bank wind farm export cable corridor boundaries (see Figure 1), with the respective co-ordinates listed in Table 1. It should be noted that SSE Renewables are not expecting fishermen to relocate gear - on this occasion the vessels will work around any gear on location. An escort/support vessel will operate at the same time as the survey vessel to ensure that this can be achieved.

The survey work is being undertaken by XOCEAN Ltd. and will be conducted from up to two unmanned surface vessels (USV's). The escort/support vessel will be the MV Silver Sky.

Figure 1: Survey Boundary Within the Proposed Export Cable Corridor for Berwick Bank Wind Farm and Marr Bank Wind Farm



Survey Duration

The surveys are currently ongoing and due to recent weather constraints, we are seeking to extend the duration of the survey, which will now go beyond the end of March 2021. The expected completion for the survey will now be the end of April 2021, weather permitting, and therefore there may be the potential for an extension to the work duration. In order to minimise any disruption, we have brought the second phase forward to prevent the requirement for further works later in Spring 2021 and we are also utilising two USV's.

Survey Tasks

The USV survey is designed to investigate a potential landfall area in the vicinity of Skateraw and along the proposed export cable corridor towards the Berwick Bank and Marr Bank Wind Farms.

The survey will acquire accurate bathymetry data using Multibeam Echo Sounder (MBES) in order to determine site topography.

Additionally, it is designed to gather high-resolution sub-bottom profiler (SBP) data to determine the shallow sub-surface soil conditions that may influence the opportunities for cable burial in the area.

It is expected that the survey, once started, will take approximately 14 days to complete, weather permitting.

The MV Silver Sky will be on call to assist in any support function that is required during the survey period.

The survey area is defined by the following WGS84 coordinates in Table 1, which provide the maximum extent of the survey (with the nearshore extent being bounded by the coast):

Table 1 – Survey Boundary Coordinates Within the Proposed Export Cable Corridor for Berwick Bank Wind Farm and Marr Bank Wind Farm

Ref	WGS84 30N Easting	WGS84 30N Northing	WGS84 Latitude	WGS84 Longitude
1	535001	6203944	55.97954	-2.43909
2	538058	6207519	56.01142	-2.38960
3	547480	6210171	56.03440	-2.23803
4	554895	6211181	56.04269	-2.11883
5	561075	6219630	56.11784	-2.01772
6	561704	6220151	56.12244	-2.00749
7	564398	6215970	56.08453	-1.96516
8	563374	6214989	56.07586	-1.98186
9	557312	6207034	56.00515	-2.08093
10	552214	6205158	55.98888	-2.16304
11	550353	6204098	55.97955	-2.19307
12	546437	6205006	55.98811	-2.25565
13	539392	6205381	55.99211	-2.36851
14	537091	6203081	55.97162	-2.40571

Offshore Survey and Escort/Support Vessels



XOCEAN Unmanned Surface Vessel (USV)

The XOCEAN USV is designed and equipped to carry out geophysical survey operations on a 24/7 basis, as well as other offshore survey activities, and has a LOA of 4.5m, a beam of 2.2m and a draught of 0.6m. The vessel is uncrewed and is piloted remotely using satellite communications. The USV sends real time images and situational awareness data to XOCEAN's Operations Centre where a team of qualified USV Pilots keep watch and control the vessel 24/7. Up to two vessels may be deployed on site at any given time.

Vessel Contact Details

XOCEAN USV
Vessel Call Sign: MGQ06 & MGMK5
IMO Number (MMSI): 232025962 & 232025477
Bridge (JP Kearns): +353 (0) 87 051 8601
Project Manager (Clodagh McAnerney): +353 (0) 87 676 8806
Email: operations@xocean.com

Contact Details

Further marine enquiries should be addressed to the following person:

Clodagh McAnerney

Operations Manager XOCEAN

Telephone +353 (0) 87 676 8806

Email: clodagh.mcanerney@xocean.com

Address: XOCEAN Ltd., Greenore, Co.Louth, Ireland A91 E765



MV Silver Sky

The MV Silver Sky is an Interceptor 38, Category 2 workboat operated by Marine Quest out of Eyemouth harbour. She will be tasked with escort duties as well as any survey support functions, which may include marine mammal observation, identifying fishing gear and recovery/O&M operations. She will be on call for the duration of the survey. She has a LOA of 12m, a beam of 3.3m and a draft of <1m.

Vessel Contact Details

MV Silver Sky
Vessel Call Sign: ZQNS2
Bridge: +44 (0) 7780 823 884
Skipper: Iain Easingwood
Email: info@marinequest.co.uk

Contact Details – Fisheries Liaison

Onshore fisheries liaison for this survey will be co-ordinated by Brown and May Marine (BMM). If there are commercial fishery queries, please contact Sophie Farenden, Office T: 01379 872149; Mobile T: 07525 128344 (sophie.farenden@brownmay.com).

Due to the restricted size of the support vessel there will not be an offshore fisheries liaison officer (FLO) aboard. However, the skipper of the vessel will issue regular broadcasts whilst the survey vessel is operating to ensure minimal disruption and that vessels maintain an appropriate and safe distance. SSE Renewables are not expecting any fishermen to relocate gear - on this occasion the vessels will work around any gear on location.

FURTHER DETAILS ARE AVAILABLE FROM:

Roger Birchall

Cathie (UK)

Unit 1

Sycamore Court

Royal Oak Yard

Bermondsey Street

London

SE1 3TR

Mobile: +44(0)7941 290309 E-mail: roger.birchall@cathiegroup.com

If not available, please contact:

Douglas Watson

SSE Renewables at the above address

Mobile: +44(0)7342 028219 E-mail: douglas.watson2@sse.com